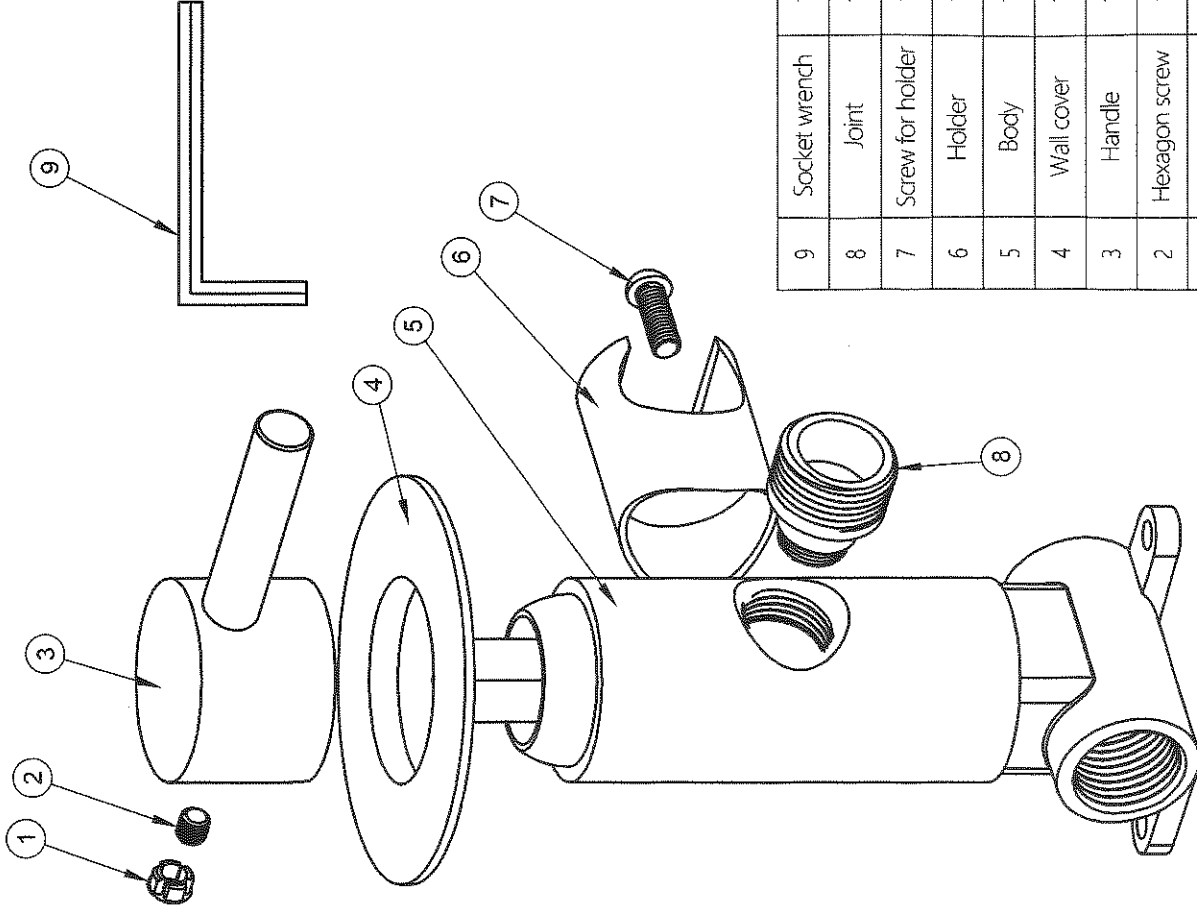
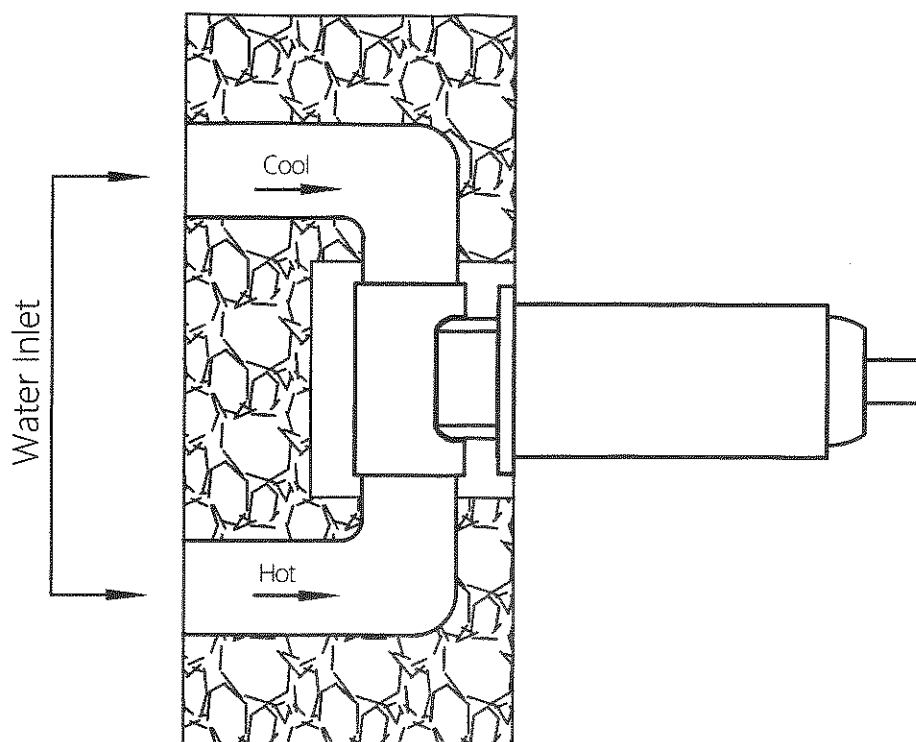


# Part List and Installation

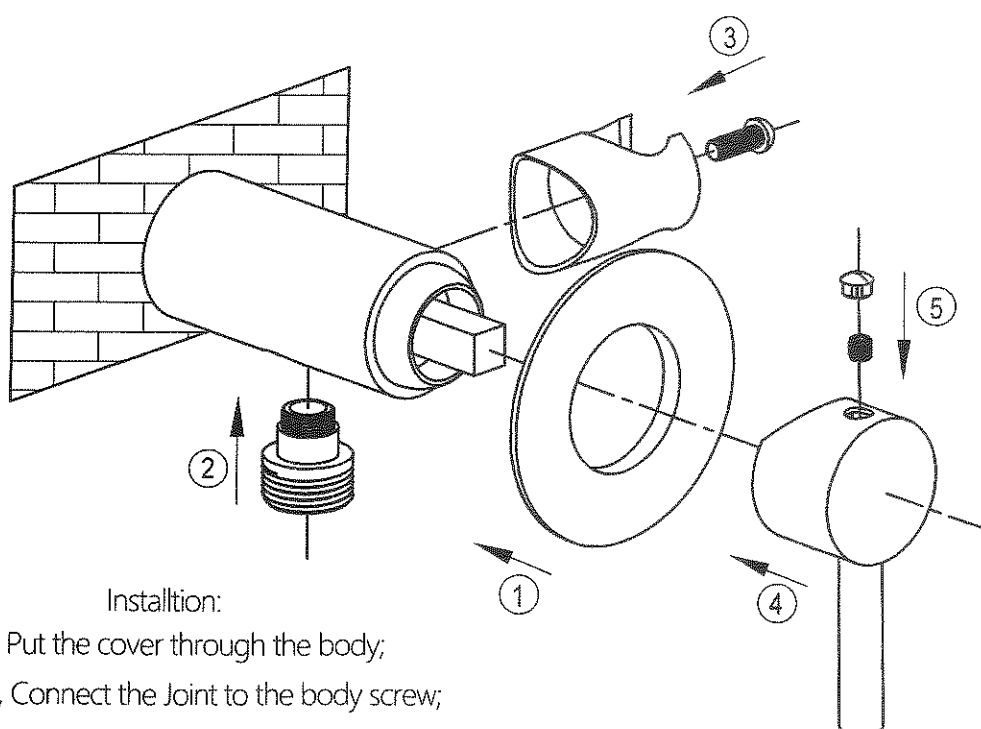


9	Socket wrench	1
8	Joint	1
7	Screw for holder	1
6	Holder	1
5	Body	1
4	Wall cover	1
3	Handle	1
2	Hexagon screw	1
1	Blue and red plug	1
Item No	Name	QTY

Standard Part List



Installation 1



Installation:

- 1, Put the cover through the body;
- 2, Connect the Joint to the body screw;
- 3, Put the holder close to the body and fasten one screw;
- 4, Put the handle on the cartridge;
- 5, Fix the hexagon screw with socket wrench then put the blue and red plug in.

Installation 2