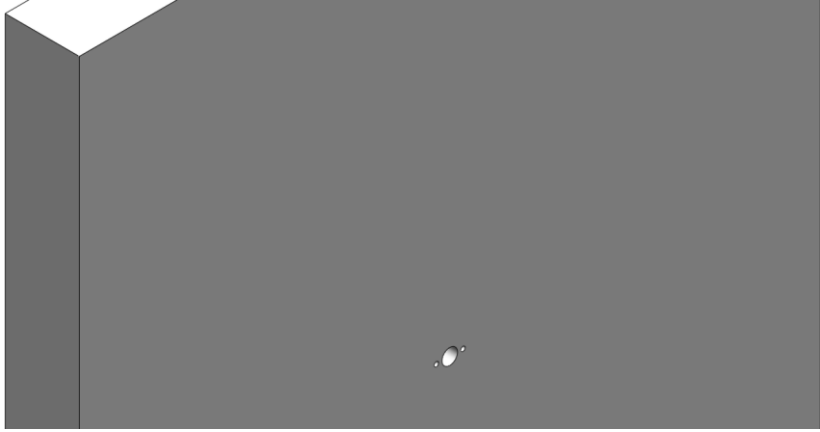
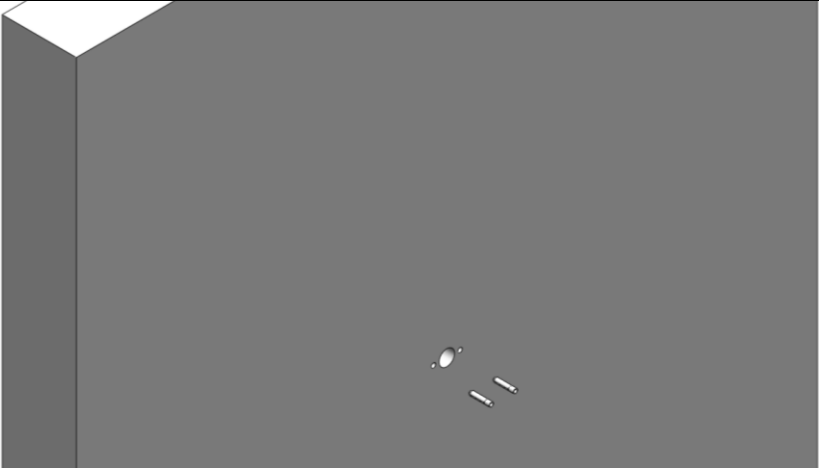

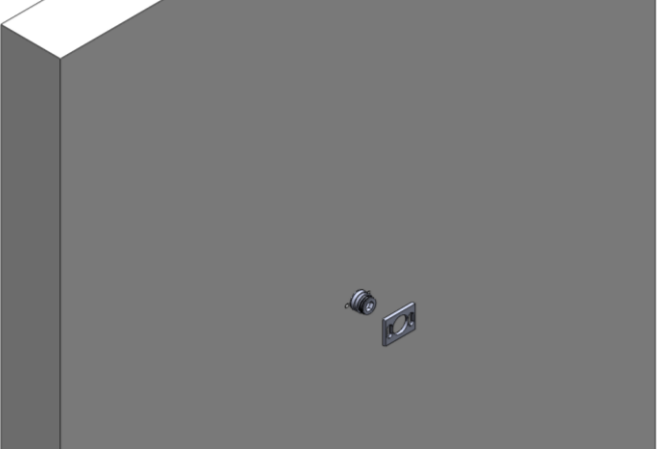
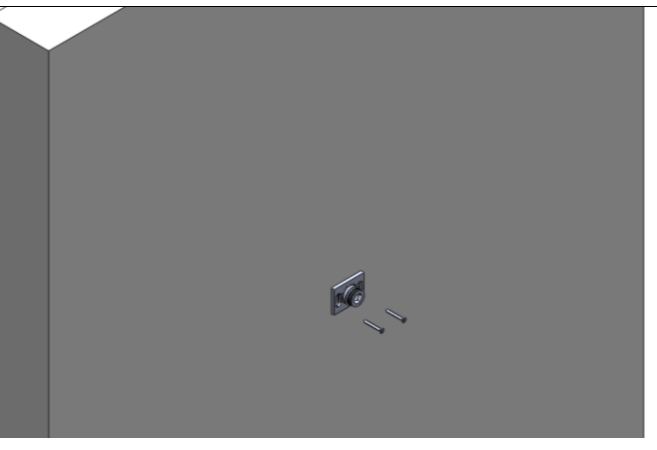
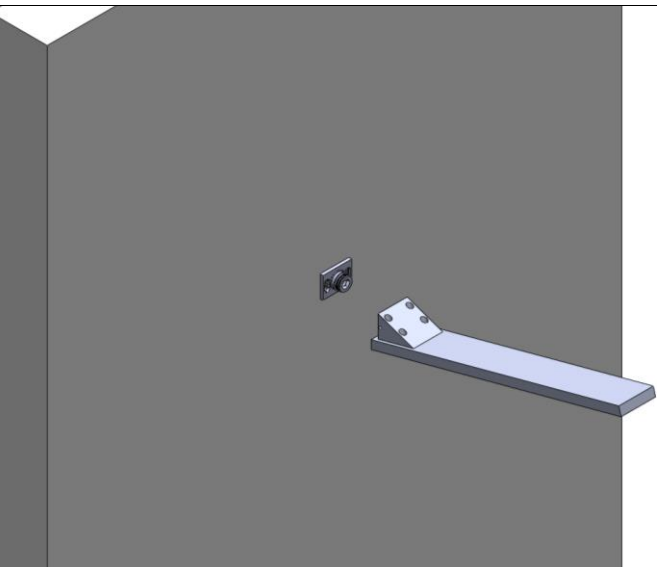
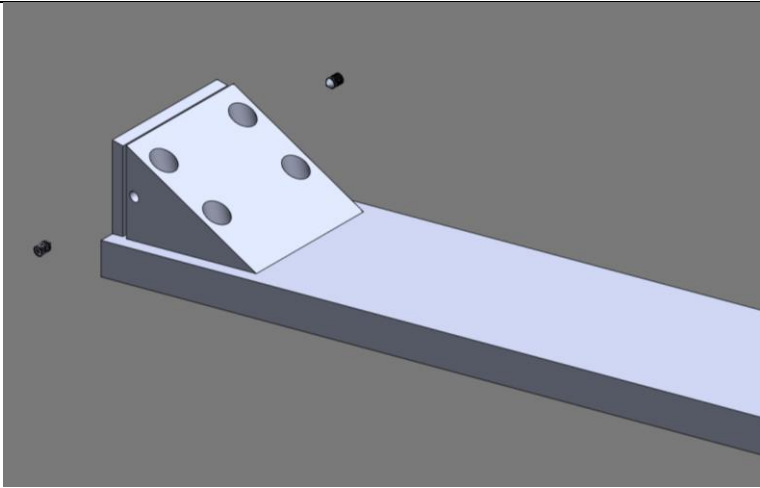
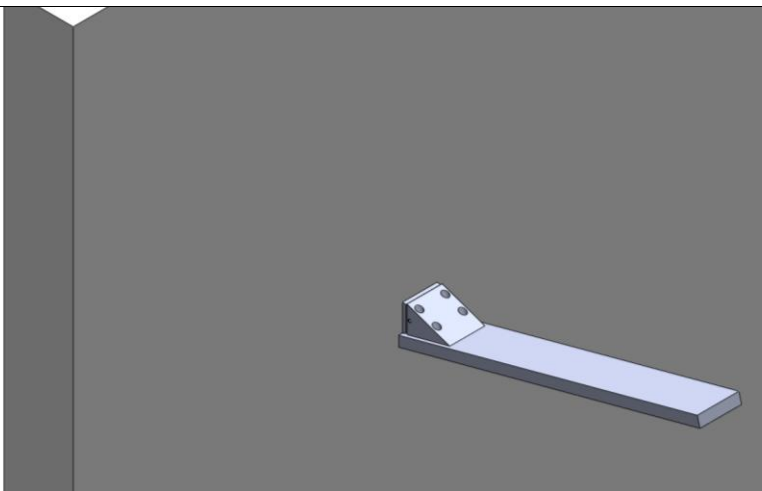


Disegno	Spiegazione
 A 3D perspective diagram of a grey wall. A single hole is being drilled into the wall. A small, light-colored object, likely a drill bit or a guide, is positioned at the hole. The top-left corner of the wall is cut off at a 45-degree angle.	<p>Praticare i due fori nel muro (utilizzando il rosone del braccio come dima) di fianco all'attacco dell'acqua</p>
 A 3D perspective diagram of a grey wall. Two holes are being drilled into the wall. A small, light-colored object, likely a drill bit or a guide, is positioned at one of the holes. The top-left corner of the wall is cut off at a 45-degree angle.	<p>Fissare i due tasselli</p>
 A 3D perspective diagram of a grey wall. A threaded connector is being attached to the wall. The connector is a dark, cylindrical object with a threaded end. A small, light-colored object, likely a drill bit or a guide, is positioned at the hole. The top-left corner of the wall is cut off at a 45-degree angle.	<p>Avvitare il connettore filettato all'attacco dell'acqua</p>

 An illustration showing a shower head and its mounting plate being held against a grey wall. The shower head is a circular, multi-hole fixture, and the mounting plate is a square plate with a circular hole in the center. The wall is shown in a perspective view, with a white ceiling and a white corner trim.		<p>Posizionare il rosone a muro</p>
 An illustration showing the shower head and mounting plate being secured to the wall. Two screws are shown being inserted into the mounting plate. The shower head is now attached to the wall.		<p>Fissare il rosone con le due viti</p>
 An illustration showing a shower arm being attached to the shower head. The shower arm is a long, curved metal arm with a threaded end. It is being inserted into the shower head. The shower head is now mounted on the wall, and the shower arm is being attached to it.		<p>Posizionare il braccio doccia fissandolo a pressione al connettore filettato</p>



Fissare il braccio doccia con le due brugole in dotazione



Il braccio doccia è montato e pronto per l'uso